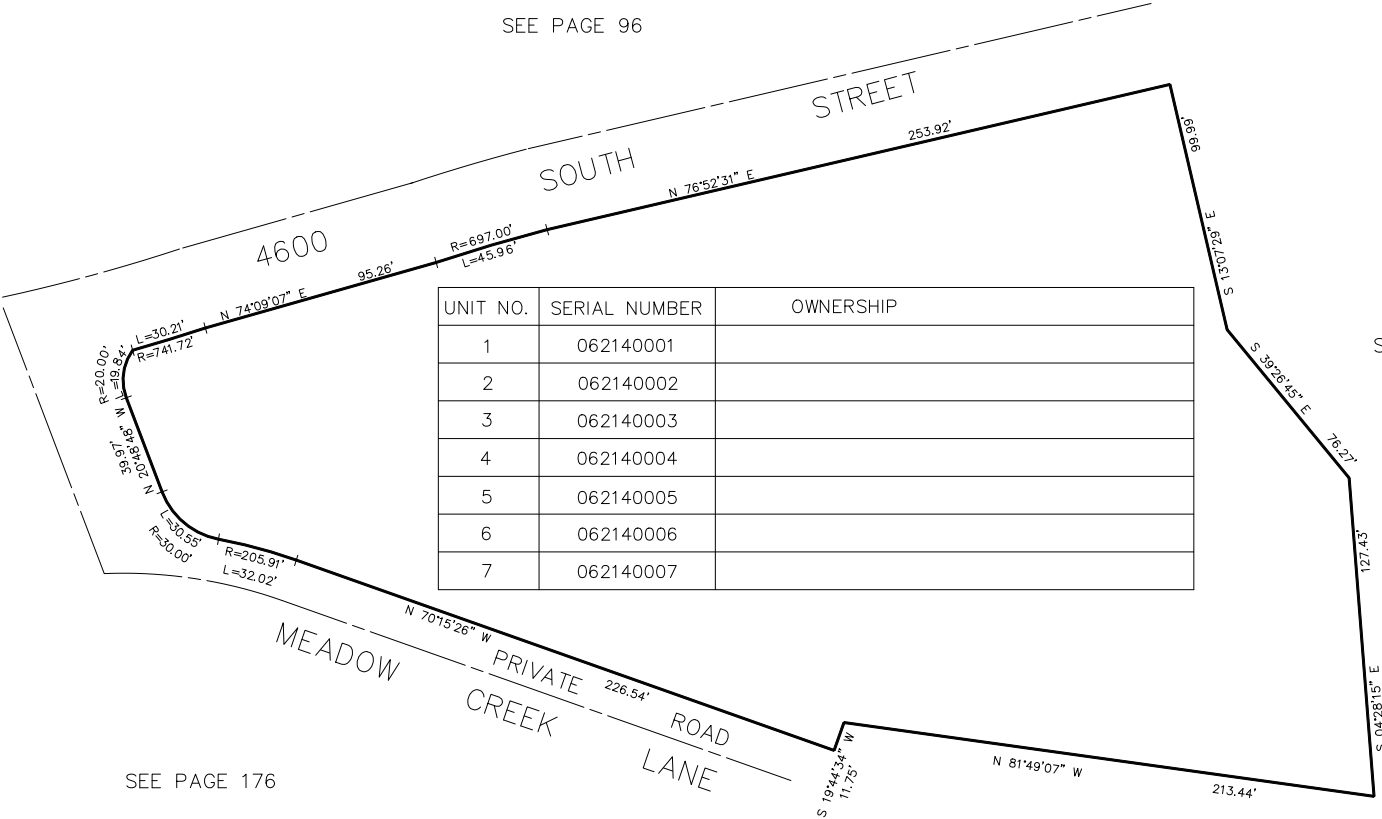


PART OF THE S.E. 1/4 OF SECTION 10, T.5N., R.1W., S.L.B. & M.  
MOUNTAIN MEADOWS MULTIPLE UNIT COND. PH 4

TAXING UNIT: 25

IN OGDEN CITY  
SCALE 1" = 40'

SEE PAGE 96



FOR COMPLETE ENG DATA SEE  
ORIGINAL DEDICATION PLAT IN  
BOOK 35, PAGE 53 OF RECORDS.